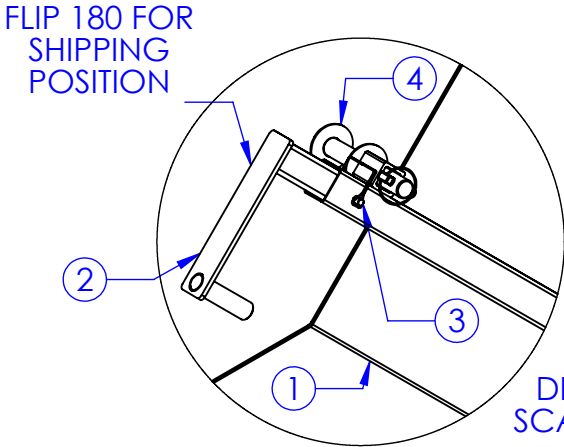
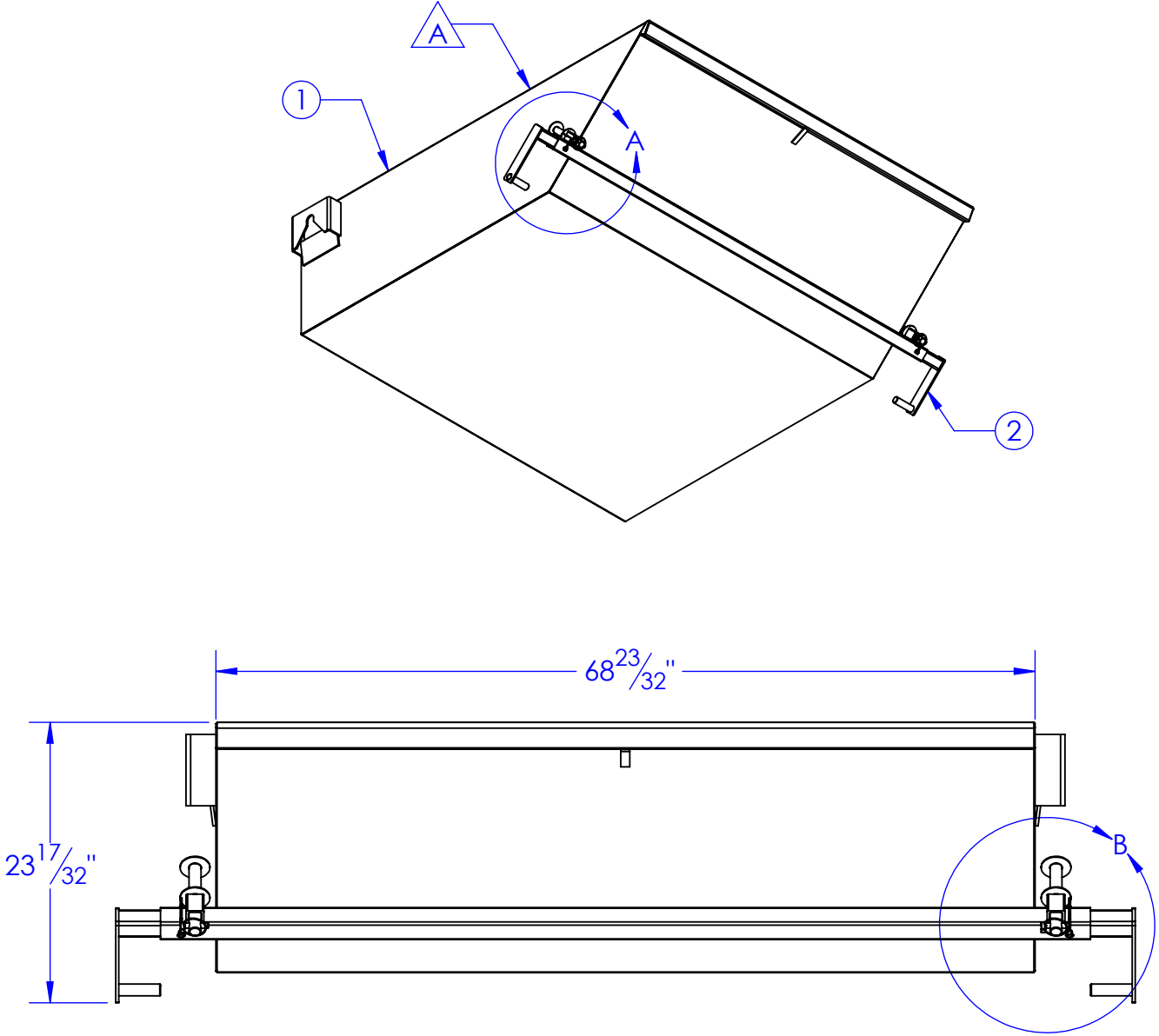
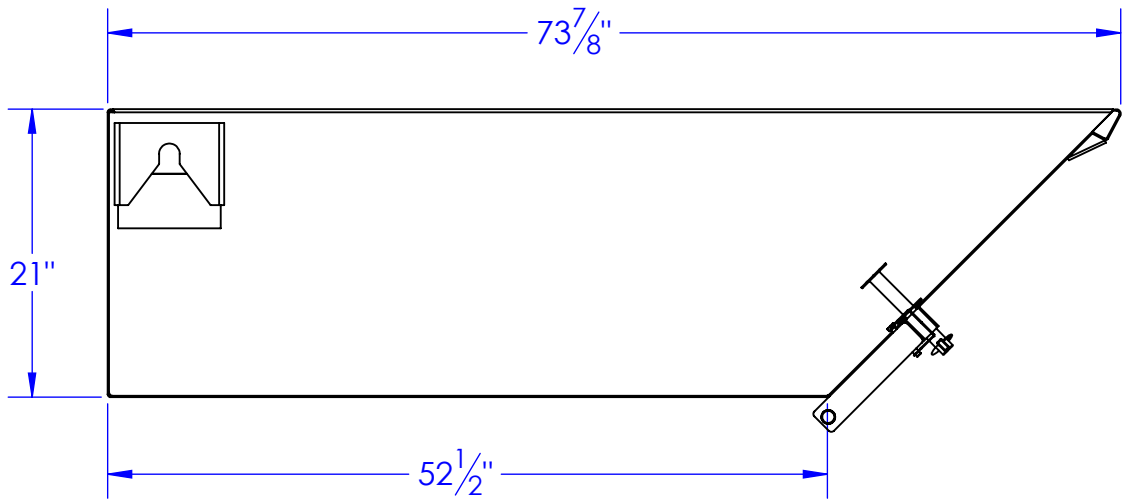
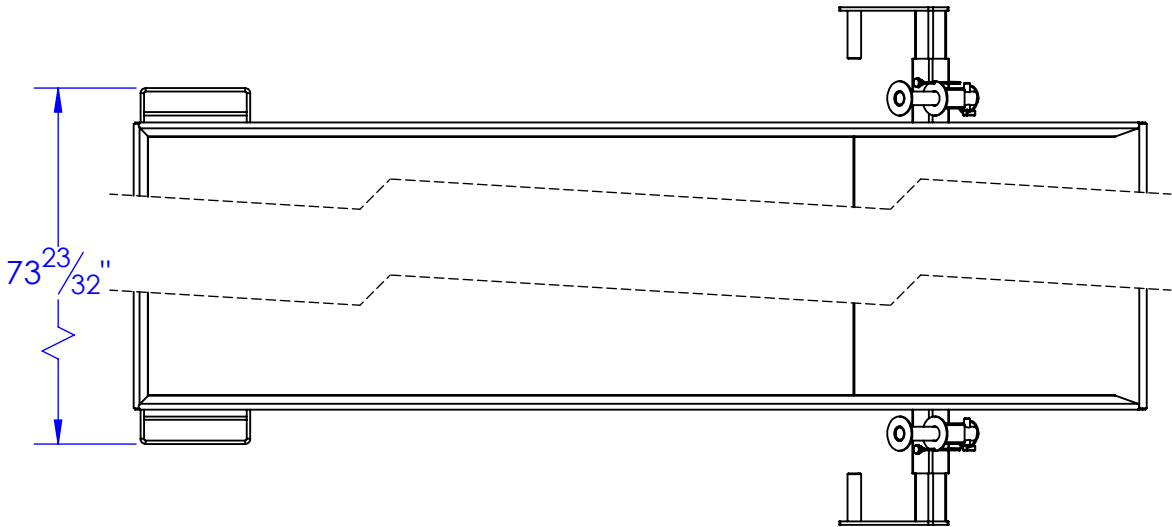


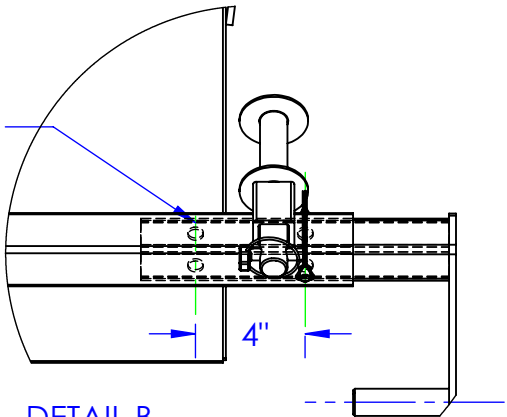
ITEM NO.	PART NUMBER	DESCRIPTION	DRAWING #	QTY.
1	FP-DB2-7	WELDMENT ASSEMBLY DUMPBOX	90-1501	1
2	FP-DB2-13	KEEPER BAR DUMP BOX	90-1500	2
3	HD-SNAP PIN 2.75	SNAP PIN 3/8 x 2-3/4	STOCK	2
4	RE-PN-L0768	PIN, LIFT DB200	10-1710	2

REV.	REVISIONS DESCRIPTION	DATE	APPROVED
A	UPDATED TO NEW STANDARD DWG # FROM DB2-8	11/21/2012	



DETAIL A
SCALE 1 : 10

PIN HOLE FOR
50 SERIES BEDS



DETAIL B
SCALE 1 : 7

NOTE:
1. OP-DBLP-150 " 150 DUMP BOX PINS"
REQUIRED ON ALL 50 SERIES BEDS

PROPRIETARY AND CONFIDENTIAL
THE INFORMATION CONTAINED IN THIS
DRAWING IS THE SOLE PROPERTY OF
<INSERT COMPANY NAME HERE>. ANY
REPRODUCTION IN PART OR AS A WHOLE
WITHOUT THE WRITTEN PERMISSION OF
<INSERT COMPANY NAME HERE> IS
PROHIBITED.

UNLESS OTHERWISE SPECIFIED:

DIMENSIONS ARE IN INCHES
TOLERANCES:
FRACTIONAL $\pm 1/16$
ANGULAR: MACH ± 1 BEND \pm
TWO PLACE DECIMAL ± 0.10
THREE PLACE DECIMAL ± 0.005

MATERIAL

DO NOT SCALE DRAWING

DRAWN	NAME	DATE	P.O. BOX 248, SABETHA KS. 66534 (785) 284-3674 FAX (785) 284-3931	
PART #	HEATH	11/21/2012	TRIPLE C INC.	
ASM #	OP-DB 200			
COMMENTS:	DUMP BOX (2 YD)		SIZE B	DWG. NO. 90-1502
			SCALE: 1:14	REV A
			WEIGHT: 353.71	SHEET 1 OF 1